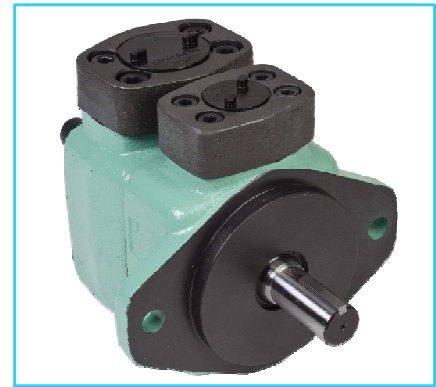
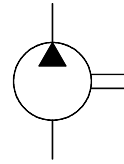


**PVR50 Series Single Vane Pumps**

These pumps are widely used as a source of hydraulic power. They combine stable Performance and robust construction with a wide range of delivery rates.

Graphic Symbol



**Specifications**

Model Number	Geometric Displacement cm <sup>3</sup> /rev.	Max. Opr. Pressure Kg/cm <sup>2</sup>	Output Flow and Input Power	Shaft Speed Range r/min.		Mass (Approx.) Kg.	
				Max.	Min.	Flange Mounting	Foot Mounting
PVR50-13	10.5	175	Ref. Page 126, 127 & 128	1800	600	12	14.7
PVR50-20	16.0						
PVR50-26	21.5						
PVR50-30	24.0						
PVR50-36	29.5						
PVR50-39	31.5						
PVR50-45	35.5						
PVR50-51	41.0						
PVR50-56	45.0						

**Model Number Designation**

F-	PVR50	-L	-F	-13	-	-R	A	A	-31	80
Special Seals	Series Number	Type of Mounting	Type of Pipe Connection	Nominal Displacement	Shaft Type	Direction of Rotation	Discharge Port Position	Suction Port Position	Design *	Design Standard
As Viewed From Shaft End										
<b>F:</b> For Phosphate Ester Type Fluids (Omit if not required)	<b>PVR50</b>	<b>L:</b> Foot Type  <b>F:</b> Flange Type	<b>F:</b> Flange Connection  <b>T:</b> Threaded	<b>13</b> <b>20</b> <b>26</b> <b>30</b> <b>36</b> <b>39</b> <b>45</b> <b>51</b> <b>56</b>	<b>None:</b> Std. Shaft.  <b>1:</b> Special Shaft (For 51 & 56 Capacity Only)	<b>R:</b> Clockwise (Normal)  <b>L:</b> Counter Clockwise	(See Drawing) <b>A:</b> Normal (Upward) <b>B:</b> Bottom <b>R:</b> Right <b>L:</b> Left	(See Drawing) <b>A:</b> Normal (Upward) <b>B:</b> Bottom <b>R:</b> Right <b>L:</b> Left	<b>31</b>	<b>80</b>

\* Design numbers subject to change from 30 to 39, but installation dimensions remain as shown.

\* For instructions regarding changing the port positions, consult YUKEN INDIA LTD.

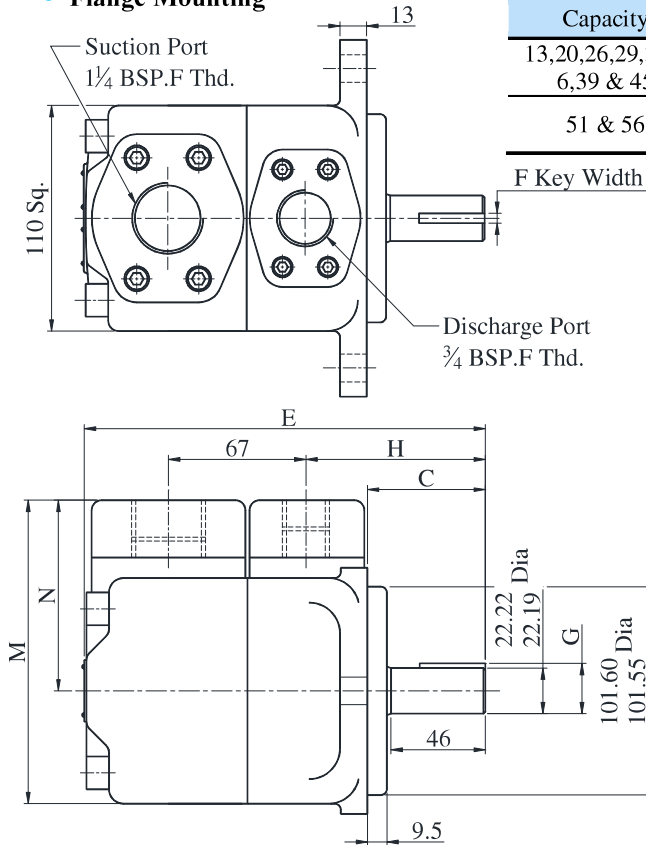
**Cartridge Kit Model Number**

CPVR50	-13	-R	-31
Model Number	Nominal Displacement	Shaft Rotation	Design No.
<b>CPVR50</b>	<b>13</b>	<b>R:</b> Clockwise (Normal)	<b>31</b>
	<b>20</b>		
	<b>26</b>		
	<b>30</b>		
	<b>36</b>	<b>L:</b> Counter-Clockwise	
	<b>39</b>		
	<b>45</b>		
	<b>51</b>		
<b>56</b>			

\* For instructions regarding replacing cartridge kit, consult YUKEN INDIA LTD.

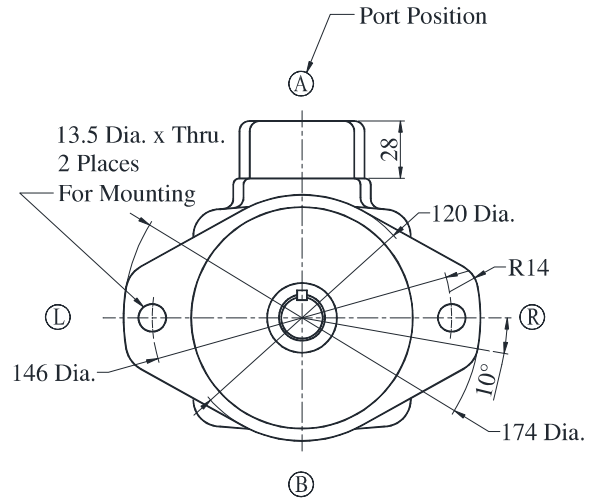
**PVR50-F-※-※-※※※※-3180**

● **Flange Mounting**



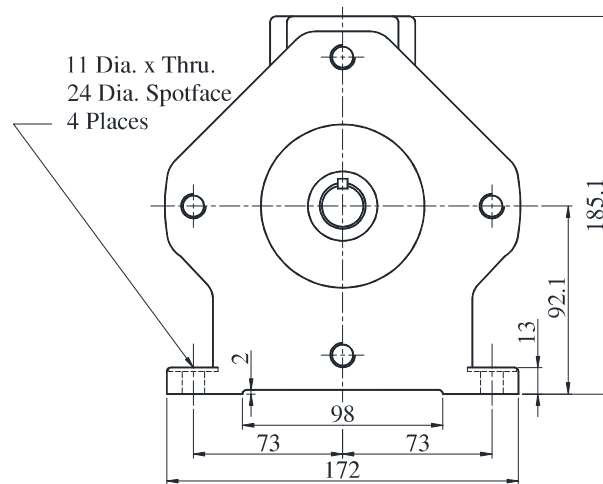
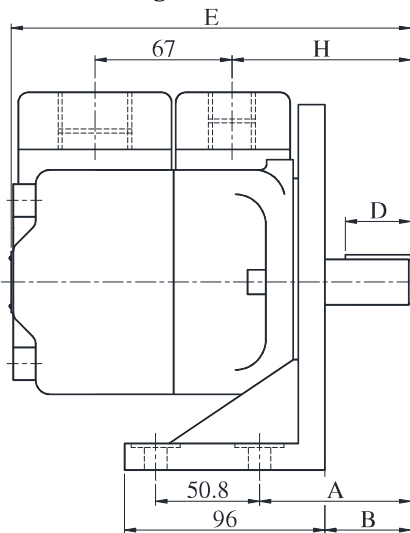
Capacity	A	B	C	D	E	F	G	H
13,20,26,29,30,3 6,39 & 45	74	42	59	32	197	4.79 4.76	24.500 24.330	87.5
51 & 56	86.4	54.4	71.4	38	209.4	6.38 6.35	24.925 24.774	100

Model	M	N
PVR50-※-F-	148	93
PVR50-※-T-	136	81



**PVR50-L-※-※-※※※※-3180**

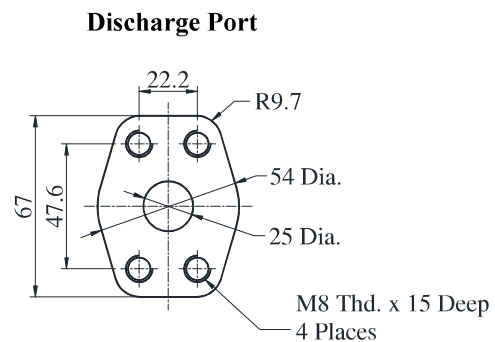
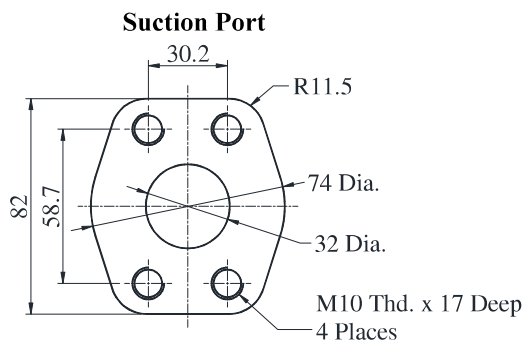
● **Foot Mounting**



**DIMENSIONS IN MILLIMETRES**

For Other Dimensions see Flange Mounting.

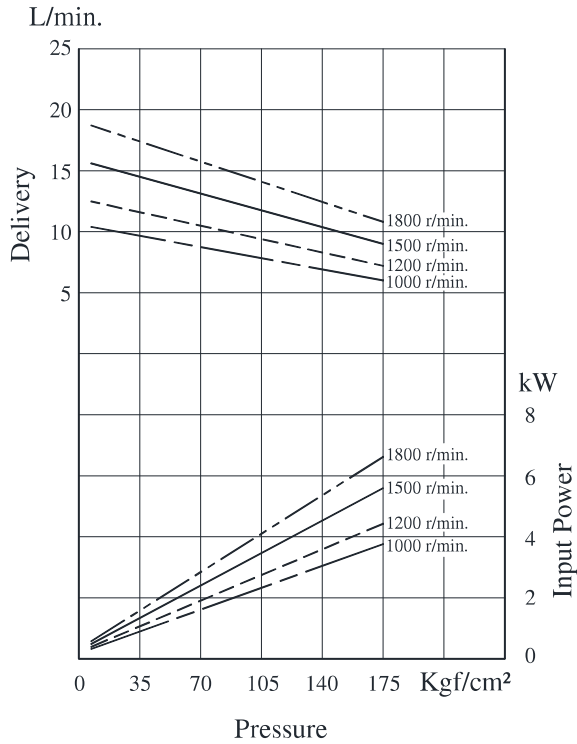
**For Reference: Dimensions of Pipe Flange Mounting Surfaces**



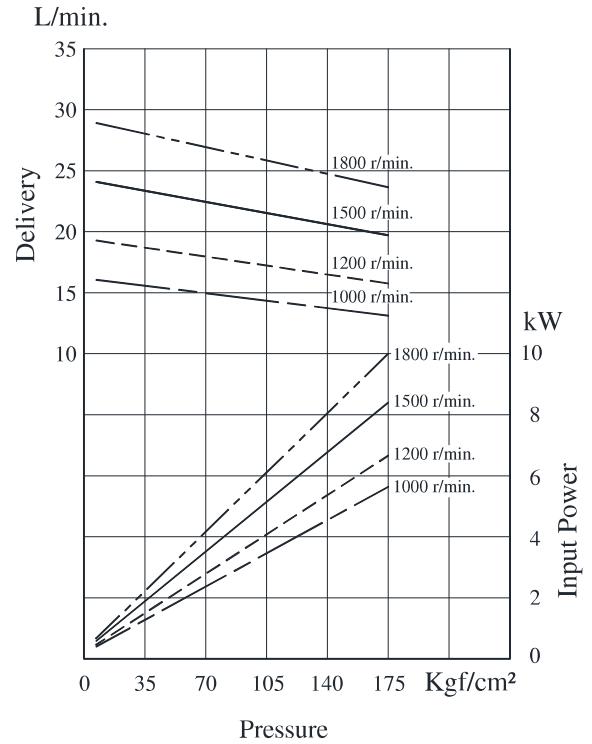
**“PVR” Series Single Vane Pumps**

Typical Pump Characteristics Oil Viscosity 20 cSt [ISO VG 32, Temp 50<sup>0</sup> C]

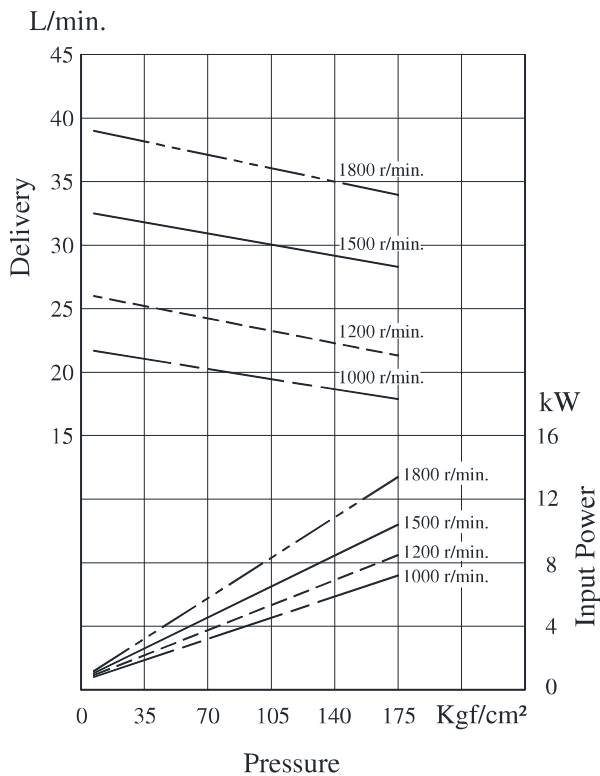
● **PVR50 - 13**



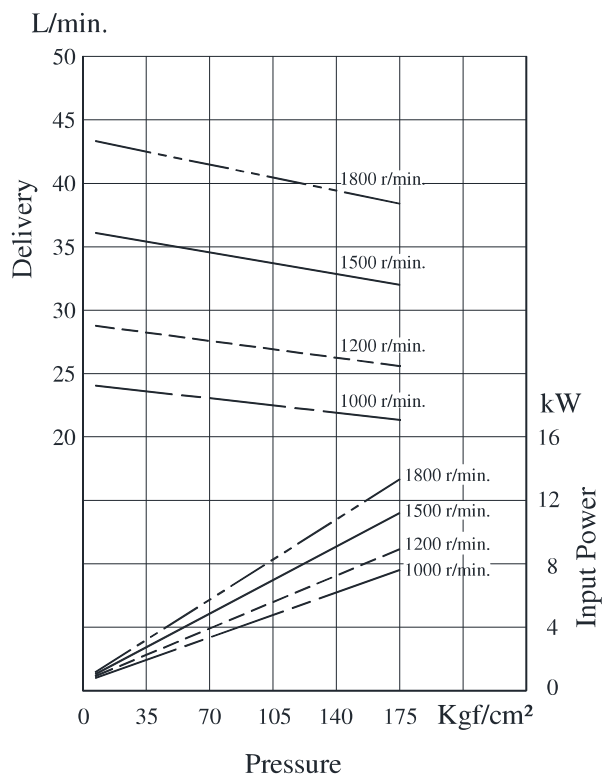
● **PVR50 - 20**



● **PVR50 - 26**

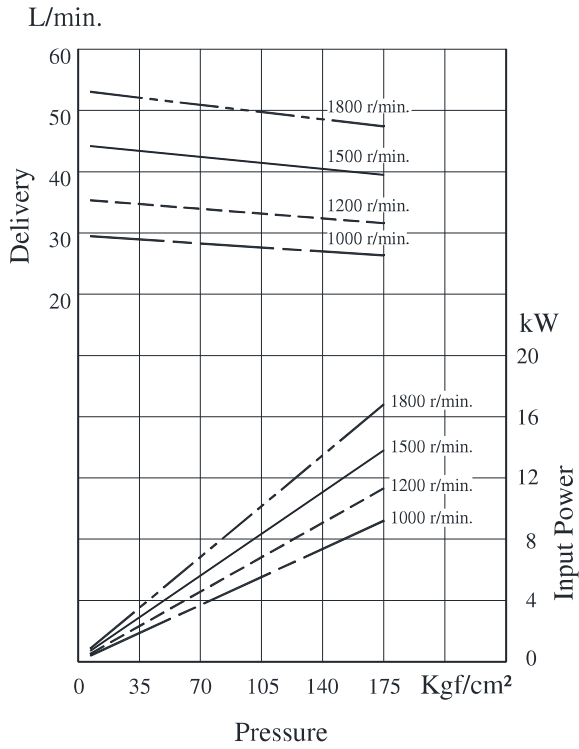


● **PVR50 - 30**

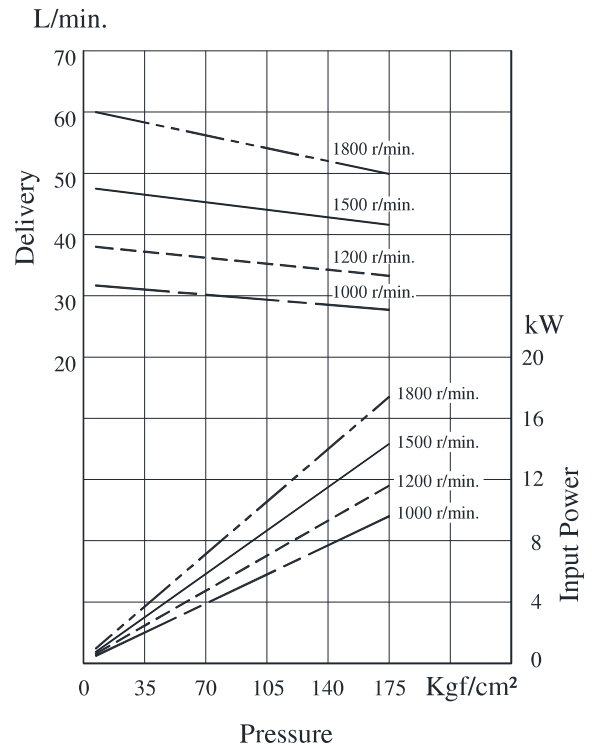


Typical Pump Characteristics Oil Viscosity 20 cSt [ISO VG 32, Temp 50<sup>0</sup> C]

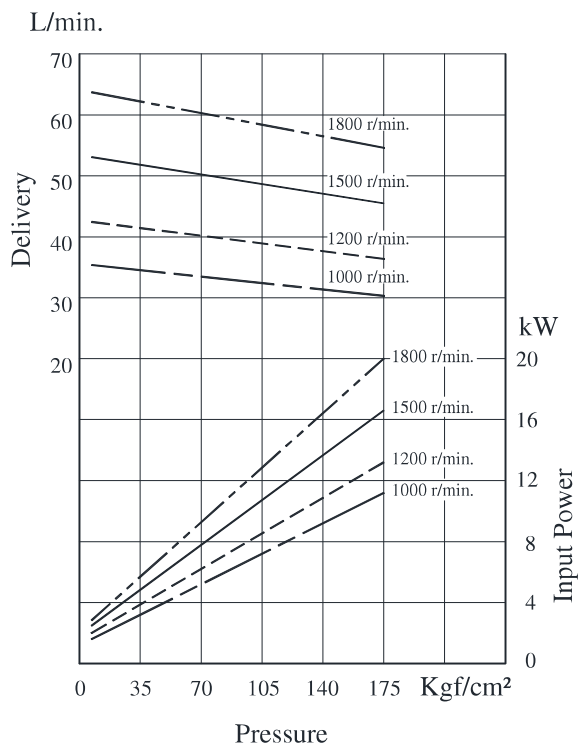
● **PVR50 - 36**



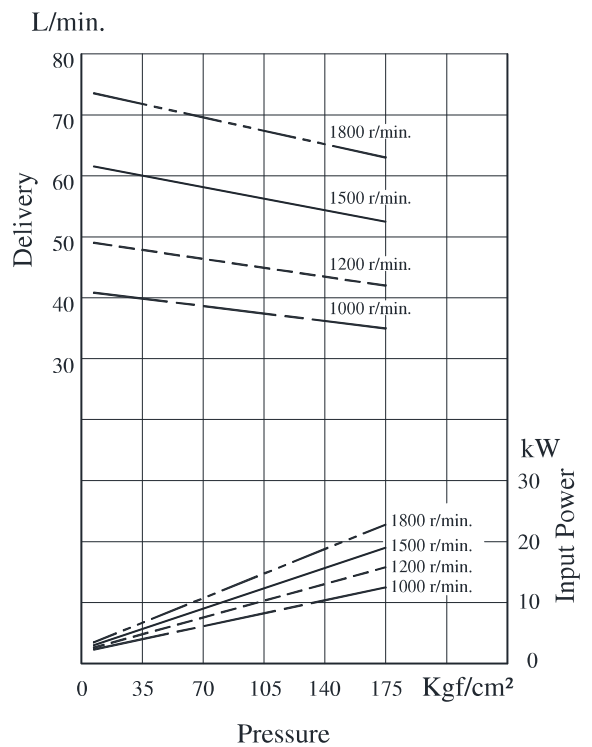
● **PVR50 - 39**



● **PVR50 - 45**

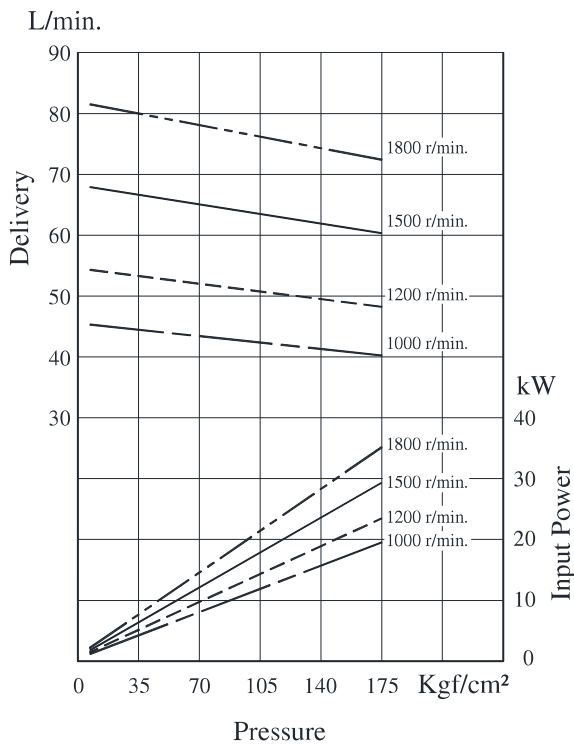


● **PVR50 - 51**



**Typical Pump Characteristics Oil Viscosity 20 cSt [ISO VG 32, Temp 50<sup>0</sup> C]**

● **PVR50 - 56**



■ **Flanges**

Note: Please refer page no. 747 for flange details.

■ **Spare Parts List**

● **List of Seals**

Sl. No.	Name of Part	Part Number	Qty.
1	O-Ring	SO-NA-G80	1
2	O-Ring	SO-NA-P41	1
3	O-Ring	SO-NB-G85	1
4	Backup-Ring	SO-BB-G80	1
5	Backup-Ring	SO-BB-P41	1
6	Oil Seal	ISPD 25388	1

Note: When ordering the seals, please specify the seal kit number KS-PVR50-3180.